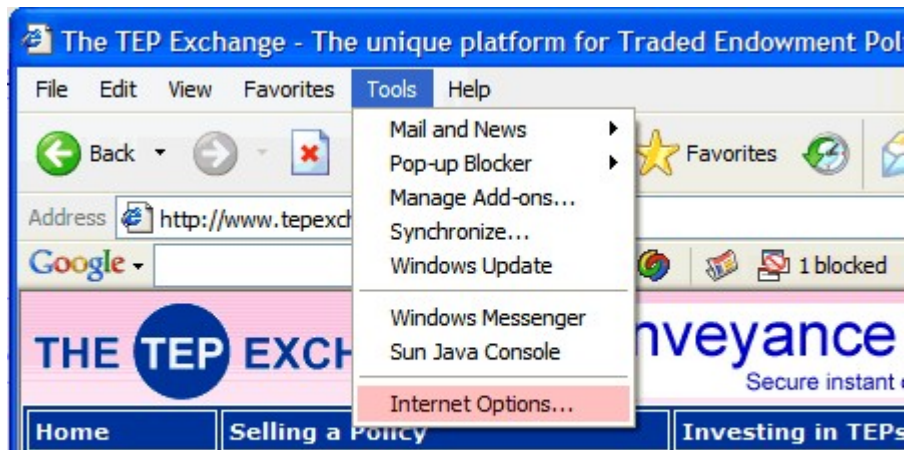


Cookies

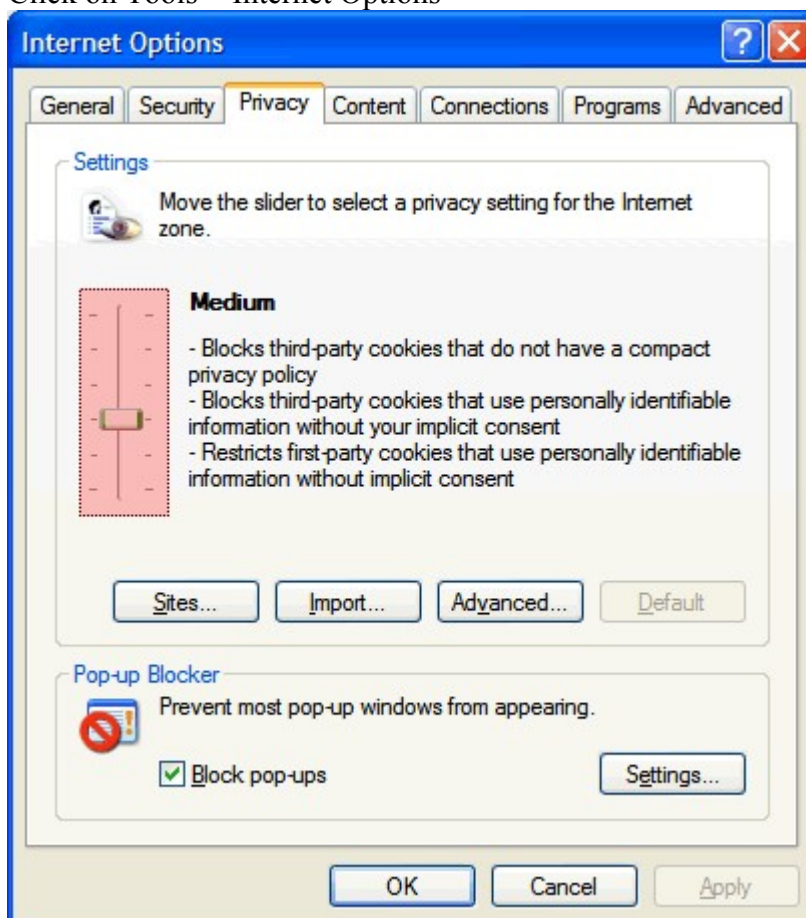
The TEP Exchange requires you to accept cookies in order to login.

If you are having difficulties accessing The TEP Exchange, please follow the procedures below.

Internet Explorer

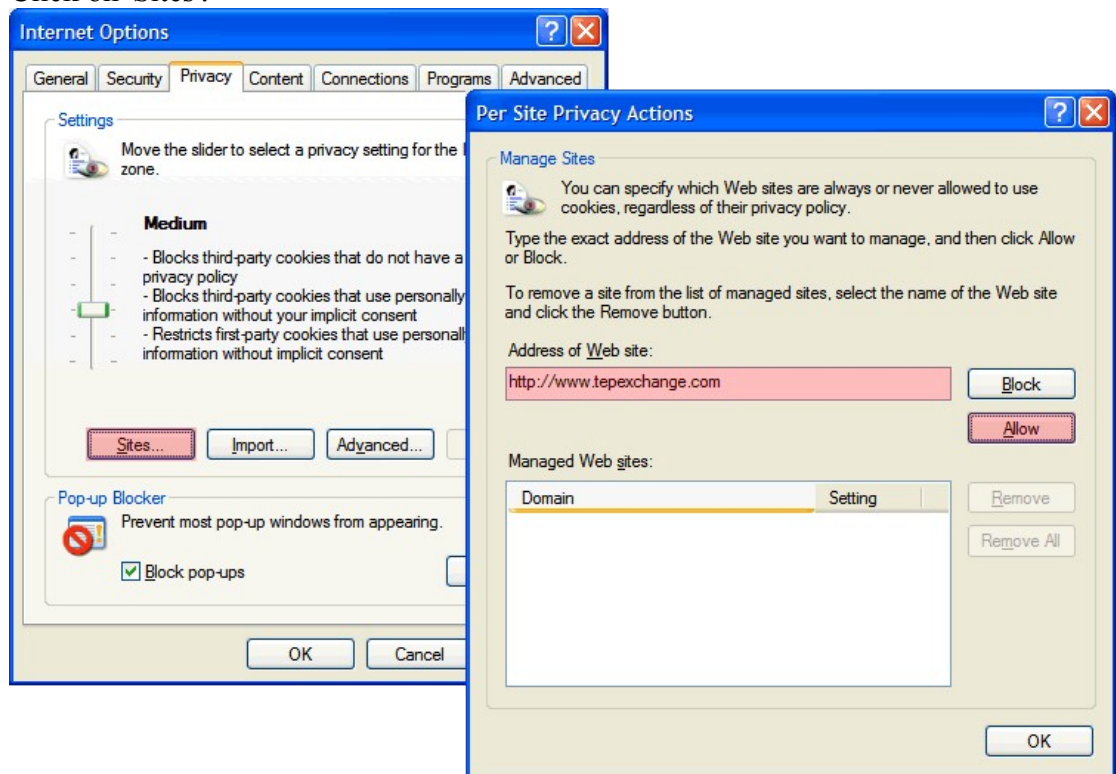


Click on Tools > Internet Options



If the privacy settings are set to Medium or higher:

- Click on 'Sites'.



- Type in The TEP Exchange address in the box provided (<http://www.tepexchange.com>) and click on the 'Allow' button.

Note: Please check with your Network Administrator before making changes to your preferences.